

Rockwell DF1 (BCC)

Supported Series: Rockwell MicroLogix 1000, 1100, 1200, 1400, 1500, SLC 5/01, 5/02, 5/03, 5/04, 5/05.

Website: <http://www.ab.com>

Note: Allen-Bradley DF1 (BCC) and Allen-Bradley DF1 are the same; the only difference is the use of BCC checksum.

HMI Setting:

Parameters	Recommended	Options	Notes
PLC type	Rockwell DF1 (BCC)		
PLC I/F	RS232		
Baud rate	19200	9600, 19200, 38400	
Data bits	8	8	
Parity	None	Even, Odd, None	
Stop bits	1	1	
HMI sta. no.	0		
PLC sta. no.	1	1-31	

PLC Setting:

Communication mode	DF1 Full Duplex protocol 19200, None, 8, 1 (default) Error Check: BCC
---------------------------	--

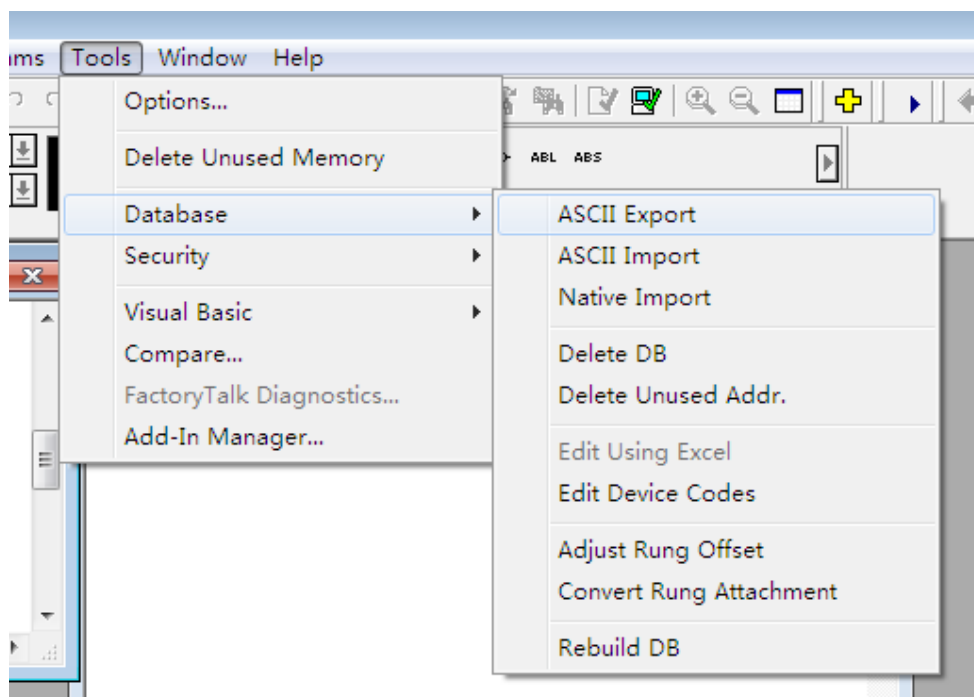
Device Address:

Bit/Word	Device type	Format	Range	Memo
B	I1	DDDdd	0 ~ 25515	Input (I)
B	O0	DDDdd	0 ~ 25515	Output (O)
B	I1n_Bit	SSEEd	0 ~ 303115	SS: slot, EE: sub element, dd:bit
B	O0n_Bit	SSEEd	0 ~ 303115	SS: slot, EE: sub element, dd:bit
B	B3	DDDdd	0 ~ 25515	Bit data file (B3)
B	B10 ~ 13	DDDdd	0 ~ 25515	Bit data file (B10 ~ 13)
B	S_Bit	DDDdd	0 ~ 25515	Status (S) bit level
B	Lfn_Bit	FFFDDDDdd	0 ~ 25525531	Long (Bit)
B	Bfn	FFFDDDDdd	0 ~ 25525515	Bit data file (B3, 10 ~ 254)
B	NfnBit	FFFDDDDdd	0 ~ 25525515	Integer data file bit level (N7, 10 ~ 254)

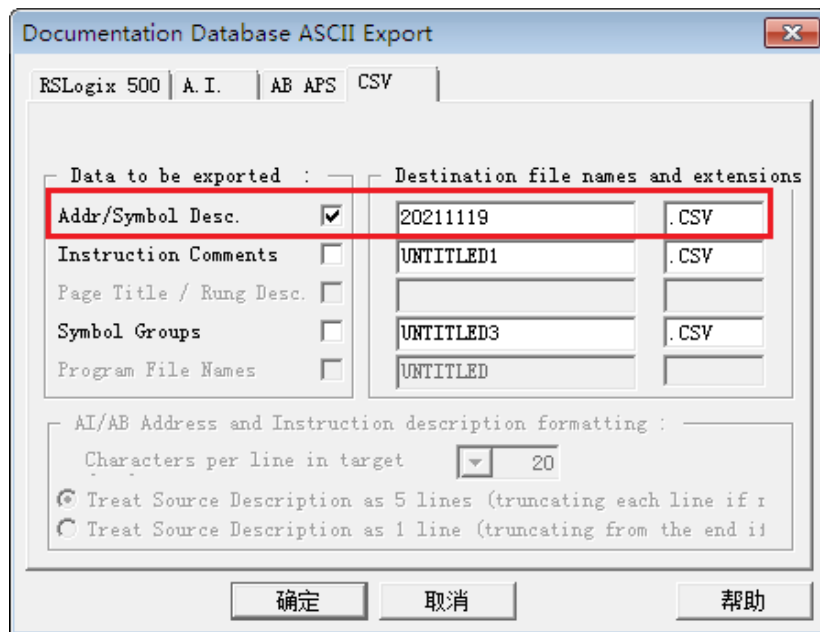
Bit/Word	Device type	Format	Range	Memo
W	I1n	SSEE	0 ~ 3031	SS: slot, EE: sub element
W	O0n	SSEE	0 ~ 3031	SS: slot, EE: sub element
W	T4SV	DDD	0 ~ 255	Timer Preset Value (T4)
W	T4PV	DDD	0 ~ 255	Timer Accumulator Value (T4)
W	C5SV	DDD	0 ~ 255	Counter Preset Value (C5)
W	C5PV	DDD	0 ~ 255	Counter Accumulator Value (C5)
W	TfnSV	FFFDDD	0 ~ 255255	Timer Preset Value
W	TfnPV	FFFDDD	0 ~ 255255	Timer Accumulator Value
W	CfnSV	FFFDDD	0 ~ 255255	Counter Preset Value
W	CfnPV	FFFDDD	0 ~ 255255	Counter Accumulator Value
W	N7	DDD	0 ~ 255	Integer data file (N7)
W	N10~15	DDD	0 ~ 255	Integer data file (N10 ~ 15)
W	Nfn	FFFDDD	0 ~ 255255	Integer data file (N7, 10 ~ 254)
W	S	DDD	0 ~ 255	Status (S)
DW (F)	F8	DDD	0 ~ 255	Floating point data file (F8)
DW (F)	Ffn	FFFDDD	0 ~ 255255	Floating point data file
DW	Lfn	FFFDDD	0 ~ 255255	Long
W	Bfn_Word	FFFDDD	0 ~ 255255	Bit data file (Word)
W	STfn	DDD.DDD.DD	0 ~ 255.255.40	File no.Element no.Data no.

Import Tags:

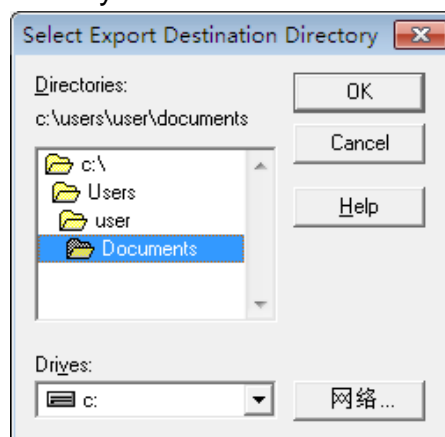
1. In the RSLogix 500 software, Tools -> Database -> ASCII Export



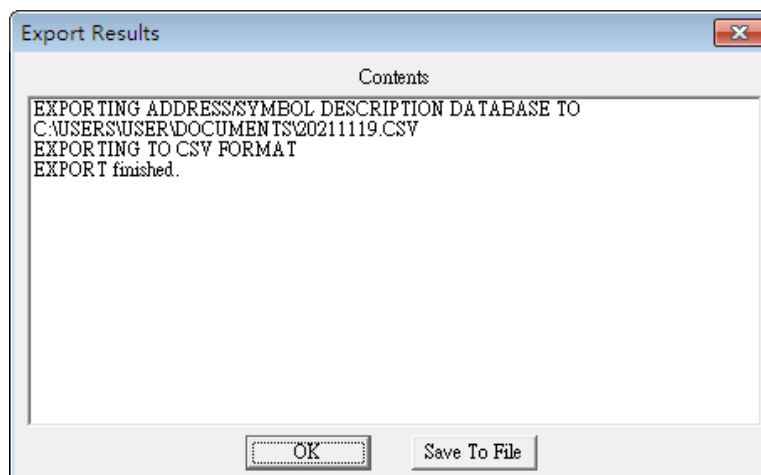
2. Select the csv tab, Add/Symbol Desc. and enter the destination file names.



3. Select export destination directory.

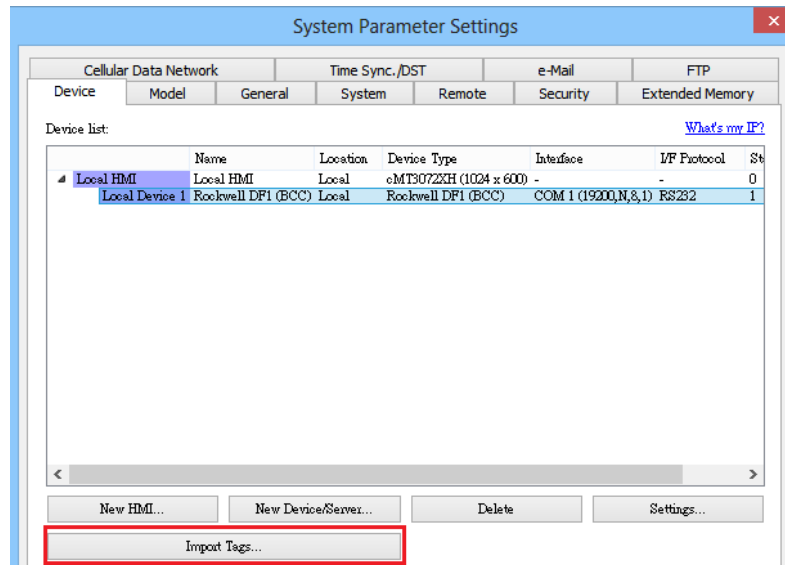


4. Export Result

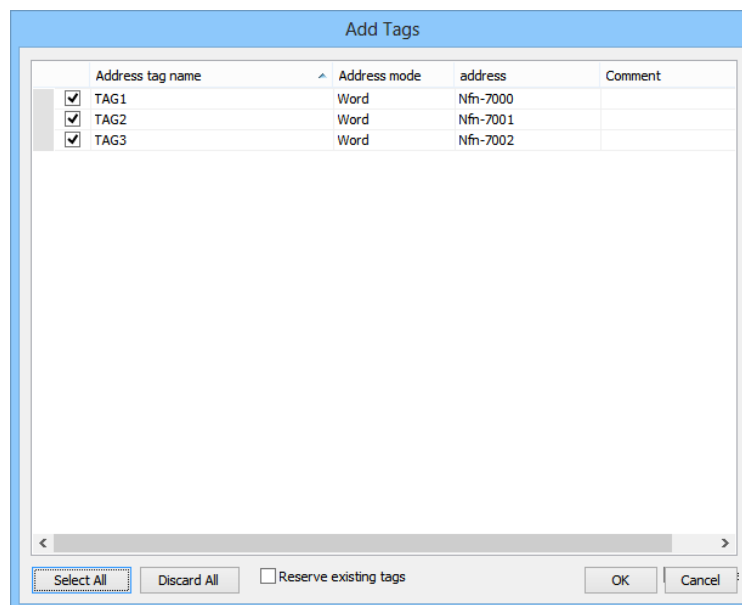


5. EasyBuilderPro -> System Parameter -> Device

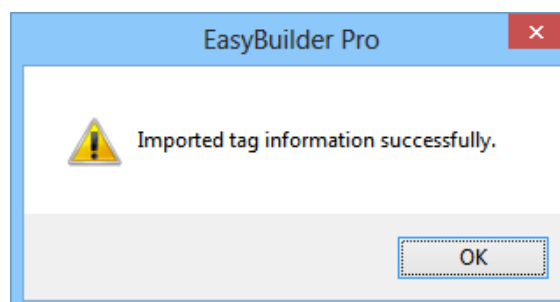
Create **[Rockwell DF1 (BCC)]** driver, click **[Import Tags]**, select the csv file the user wants to import.



6. Select the tag that the user wants to import.



7. Imported tag information successfully.



Wiring Diagram:

Diagram 1

RS-232 (9P D-Sub to 8P Mini-DIN: MicroLogix 1000, 1100, 1200, 1400, 1500)

The serial port pin assignments may vary between HMI models, please click the following link for more information.

The following is the view from the soldering point of a connector.

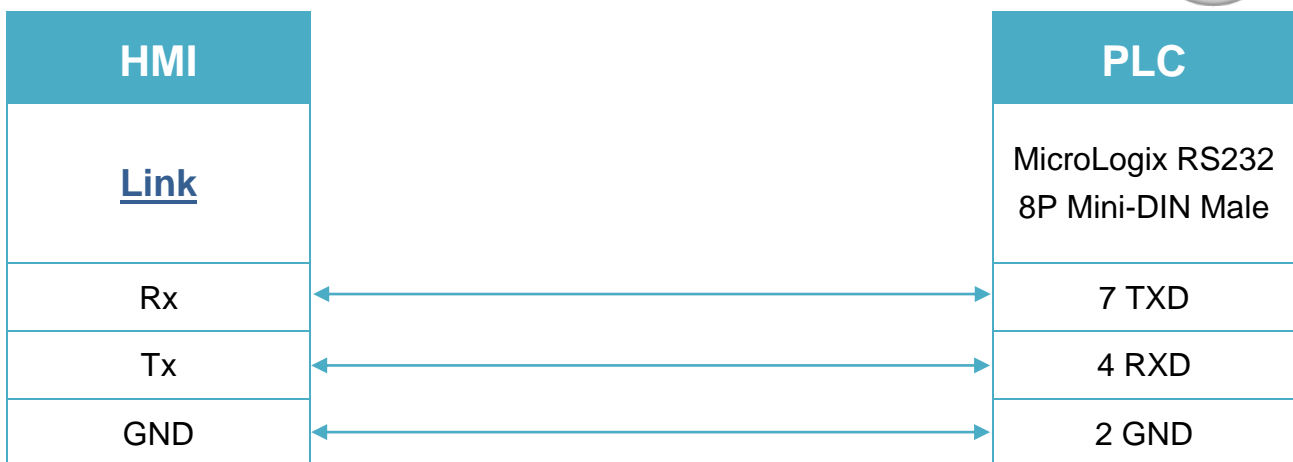


Diagram 2

RS-232 (9P D-Sub to 9P D-Sub: SLC5/03, 04, 05 CH0)

The serial port pin assignments may vary between HMI models, please click the following link for more information.

